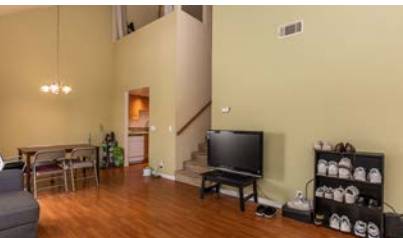




# SPACIOUS CONDO WITH VERSATILE LOFT



1033 SOUTHWOOD DR, UNIT N  
SAN LUIS OBISPO, CA 93401

OFFERED AT \$578,000

[THEAVENUESLO.COM/PROPERTY/1033](http://THEAVENUESLO.COM/PROPERTY/1033)

			
2	2	1047	2

**Parkwood Village's Largest Floor Plan!** This condo boasts 2 spacious bedrooms, 2 full baths, and a versatile loft – perfect for a home office, guest room, or creative space. Modern kitchen features updated cabinets and granite countertops. High vaulted ceilings and an open floor plan create a bright, airy atmosphere throughout. The primary bedroom includes an en-suite bath, and both bathrooms have been updated with modern vanities and tile surrounds. Custom paint and a fireplace with floor-to-ceiling rock tile add style. Washer and dryer are located within the unit. Two covered parking spots directly below and an additional storage closet in the carport provides ample storage. This condo offers the best of both worlds: a quiet location within the complex and easy access to everything you need. The community has a heated saltwater pool, clubhouse, and EV charging station. Parkwood Village is conveniently located near shopping, dining, bike trails, and bus routes. The YMCA is just across the street, while the Sinsheimer Sports Complex and Johnson Park offer further recreational opportunities. Don't miss out on this fantastic opportunity!



## DISTINCTIVE DETAILS:

- Updated kitchen and bathrooms • Large bedrooms • Vaulted ceilings • EV charging station
- Versatile loft with stairs • In-unit washer and dryer • 2 covered parking spaces
- Heated salt water pool



### KRISSY BELLISARIO

REALTOR® BRE# 01978581

(805)250 6602 **CELL** (805) 548 2670 **OFFICE**

krissy@theavenueslo.com

1333 Johnson Ave, San Luis Obispo, CA 93401

**THEAVENUESLO.COM**