

# PANORAMIC COASTAL VIEW HOME



2831 RODMAN DRIVE  
LOS OSOS, CA 93402

OFFERED AT \$1,798,000

[WWW.THEAVENUESLO.COM/PROPERTY/2831](http://WWW.THEAVENUESLO.COM/PROPERTY/2831)



**Absolutely breathtaking panoramic Pacific Ocean and Bay views** from this beautiful Cabrillo Estates home... perched high on the hills at the entrance to Montaña de Oro State Park. This beautiful and well-maintained home has a wonderful and flexible floor plan, with an open kitchen, dining, and family room featuring unobstructed ocean, Morro Rock, golf course and bay views, high ceilings with exposed beams, and an enclosed back deck. Each of the three bedrooms has its own sliding glass door to an outdoor patio with the master suite boasting its own private deck with ocean views...imagine falling asleep to the soothing sounds of the Pacific Ocean! The downstairs has lots of possibilities as a great room, media room, or guest quarters with its own bathroom and kitchenette. Laundry room is also downstairs, along with a spacious 2 car garage. All this with a lovely backyard and extreme privacy! Cabrillo Estates is considered by many to be the most desirable neighborhood in Los Osos, with the incredible views, peaceful environment, and excellent proximity to Montaña del Oro State Park and Sea Pines Golf Course. Ideally located to take advantage of all the Central Coast has to offer - wineries, hiking, golfing, beaches, shopping, restaurants, and more.



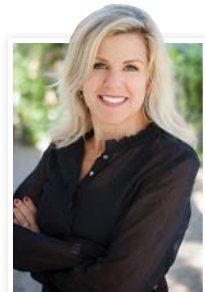


## DISTINCTIVE DETAILS:

- Panoramic coastal views to Big Sur
- Sliding glass doors from each room to an outdoor patio
- Bonus room / guest suite downstairs
- Covered back patio with new deck
- High ceilings with clerestory windows and gas fireplace
- Expansive windows, lots of light and open living/kitchen floorplan
- Gorgeous white water, Morro Rock, bay, mountain and ocean views from multiple rooms

## OUTDOORS:

- Private master bedroom deck with panoramic views
- Two car garage
- Recent Section One work decking completed
- Situated at entrance to Montaña de Oro State park
- Close to beach, bay, hiking, restaurants, wineries and shopping
- Ultra private back yard with grass lawn, retaining walls and open space



### AMY DAANE

Owner/REALTOR® BRE# 01902657

(805) 234 0621 **CELL** (805) 548 2670 **OFFICE** (805) 548 2671 **FAX**

amy@theavenueslo.com

1333 Johnson Ave, San Luis Obispo, CA 93401

**THEAVENUESLO.COM**